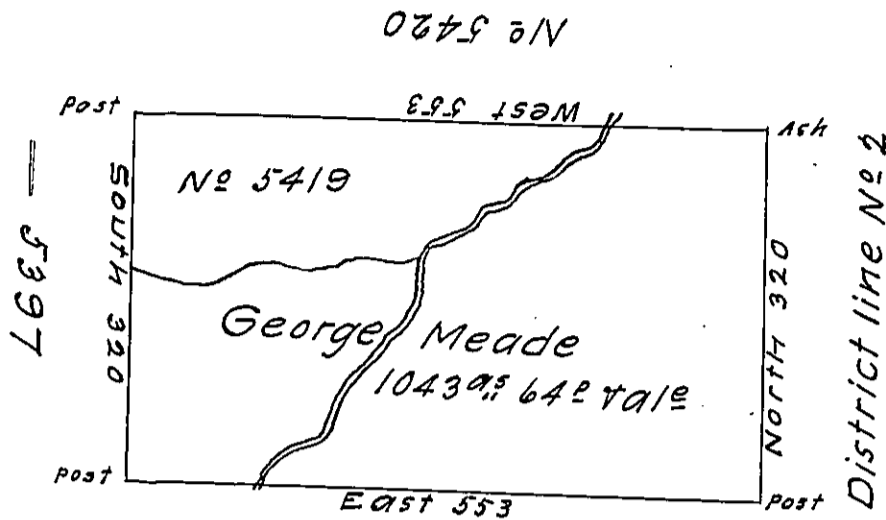


a 50-230

a 46-160



No 5418

a 46-31

Situate on the waters of Sinnemahoning Creek in North~~d~~
 County containing 1043 acres 64 perches and the usual allo-
 wance for roads. Surveyed May 7th 1794 for George Meade
 in pursuance of a warrant No 5419. dated 3^d March 1794.

John Canam D.S.

Daniel Brodhead Esq. S.G.

IN TESTIMONY that the above is a copy of the original remaining on file in
 the Department of Internal Affairs of Pennsylvania, made
 conformably to an Act of Assembly approved the 16th day of
 February, 1833, I have hereunto set my Hand and caused
 the Seal of said Department to be affixed at Harrisburg,
 this twenty fifth day of January 1912

Nancy Houser
 Secretary of Internal Affairs.